

FIN-Window Nova-line 77  
uPVC-uPVC

## Apartment building on Sardinia

Elegant interplay of materials in a new-build near Sassari.

Finstral supplied windows and lift-and-slide doors for the Residenza Calarè scheme, a marriage of tradition and modernity, in Alghero. With its blend of stone masonry and render, the building epitomises the region's vernacular architecture – a look enhanced by the externally frameless Nova-line window sashes. The expansive glazing accentuates the interplay of different materials while flooding the interior with light. The generous fronts of the lift-and-slide doors with the Step-line frame shape likewise admit ample daylight. The “White embossed” frame colour is a perfect match for the white-rendered façades.

With easy-care uPVC on both interior and exterior faces, the frames boast outstanding insulation values. The Mediterranean solar protection glass additionally reduces incident solar radiation with minimal compromises on daylighting. For pleasant indoor temperatures and an easy-going Mediterranean feel, even in high summer.

<b>Type of building</b>	Multiple-family dwelling
<b>Construction</b>	2024
<b>Project Planning</b>	New build/conversion <b>Studio Geocoss</b>
<b>Country</b>	Italy
<b>Region</b>	Sardinia
<b>City</b>	Sassari
<b>Photographer</b>	<b>Davide Troisi</b>

L'ECCELLENZA DEL BENVIVERE.

**DAMA**

HOME DESIGN

**Da.Ma.**  
Via Giuseppe Mazzini, 12  
07041 Alghero  
Italy  
**+390795625694**  
**dama.tedde@gmail.com**  
**www.infissialghero.it**

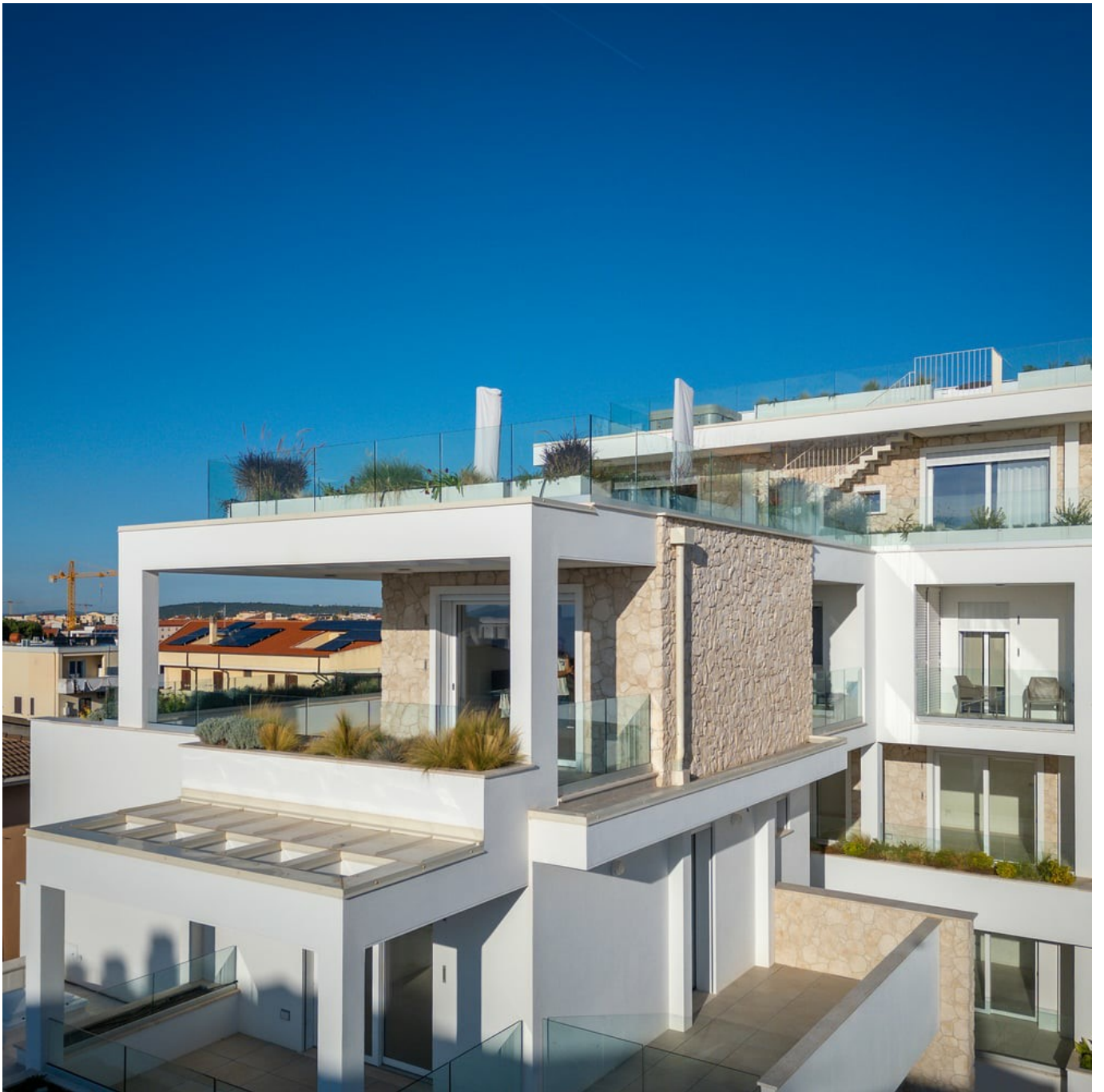


**Apartment building on Sardinia**

Elegant interplay of materials in a new-build near Sassari.

[www.finstral.com/en/references/apartment-building-on-sardinia/311-12773.html](http://www.finstral.com/en/references/apartment-building-on-sardinia/311-12773.html)















# Products used

$U_w$  - Heat transmittance coefficient of window element

$R_w$  - Sound insulation properties of a window

**npd** - No performance determined



## FIN-Window Nova-line 77

*uPVC-uPVC*

$U_w$  1-sash 2-/3-glazing:

1,2 / 0,80 W/m<sup>2</sup>K

$U_w$  2-sash 2-/3-glazing:

1,2 / 0,89 W/m<sup>2</sup>K

$R_w$  Standard:

36 (-2;-5) db

$R_w$  Best value:

45 (-1;-3) db



## FIN-Slide Step-line 160

*uPVC-uPVC*

$U_w$  1-sash 2-/3-glazing:

1,3 / 0,81 W/m<sup>2</sup>K

$U_w$  2-sash 2-/3-glazing:

1,4 / 0,92 W/m<sup>2</sup>K

$R_w$  Best value:

43 (-1;-5) db

Product data sheets and more information at  
[www.finstral.com/range](http://www.finstral.com/range)