



FIN-Window Nova-line Twin N 90+8
aluminium-uPVC

Main fire station in Regensburg

A significant building with a considerable window presence.

The sight of this new fire station will make you look twice: Finstral played a key role in the realisation of the fascinating building. The façade of the elongated, striking complex is characterised by a lively change in its structure and colour. The significant metal and ceramic façades are fitted with hundreds of windows from the FIN-Window line, with aluminium on the exterior and uPVC on the interior. With good reason: uPVC is easy to clean, durable and provides maximum insulation. The result is maintenance-free, user-friendly windows. The Nova-line frame shape with its frameless window sashes on the outside gives it all a perfect appearance and thanks to the Twin composite sash with its integrated shading, all rooms enjoy flexible solar protection.

Because Finstral does everything itself, it was possible to produce, deliver and install the huge number of windows within the agreed time-frame: Punctual completion, meant flawless acceptance.

| | |
|------------------|-------------------------------|
| Type of building | Public building |
| Construction | 2017-2023 |
| Project | New build/conversion |
| Planning | Diezinger Architekten GmbH |

| | |
|--------------|--------------|
| Country | Germany |
| Region | Bavaria |
| City | Regensburg |
| Photographer | Oliver Heini |

Main fire station in Regensburg

A significant building with a considerable window presence.

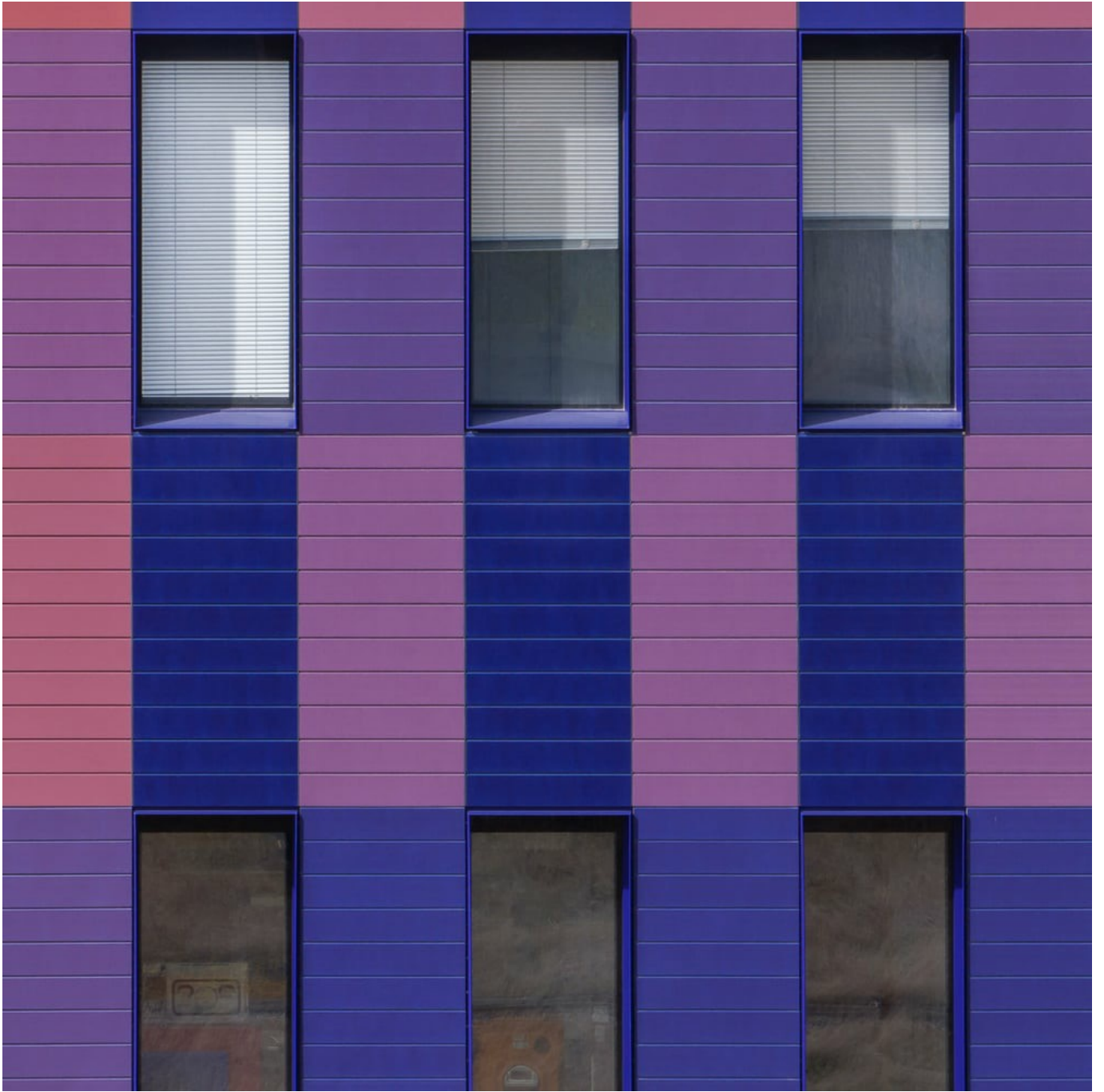
www.finstral.com/en/references/main-fire-station-in-regensburg/311-11895.html

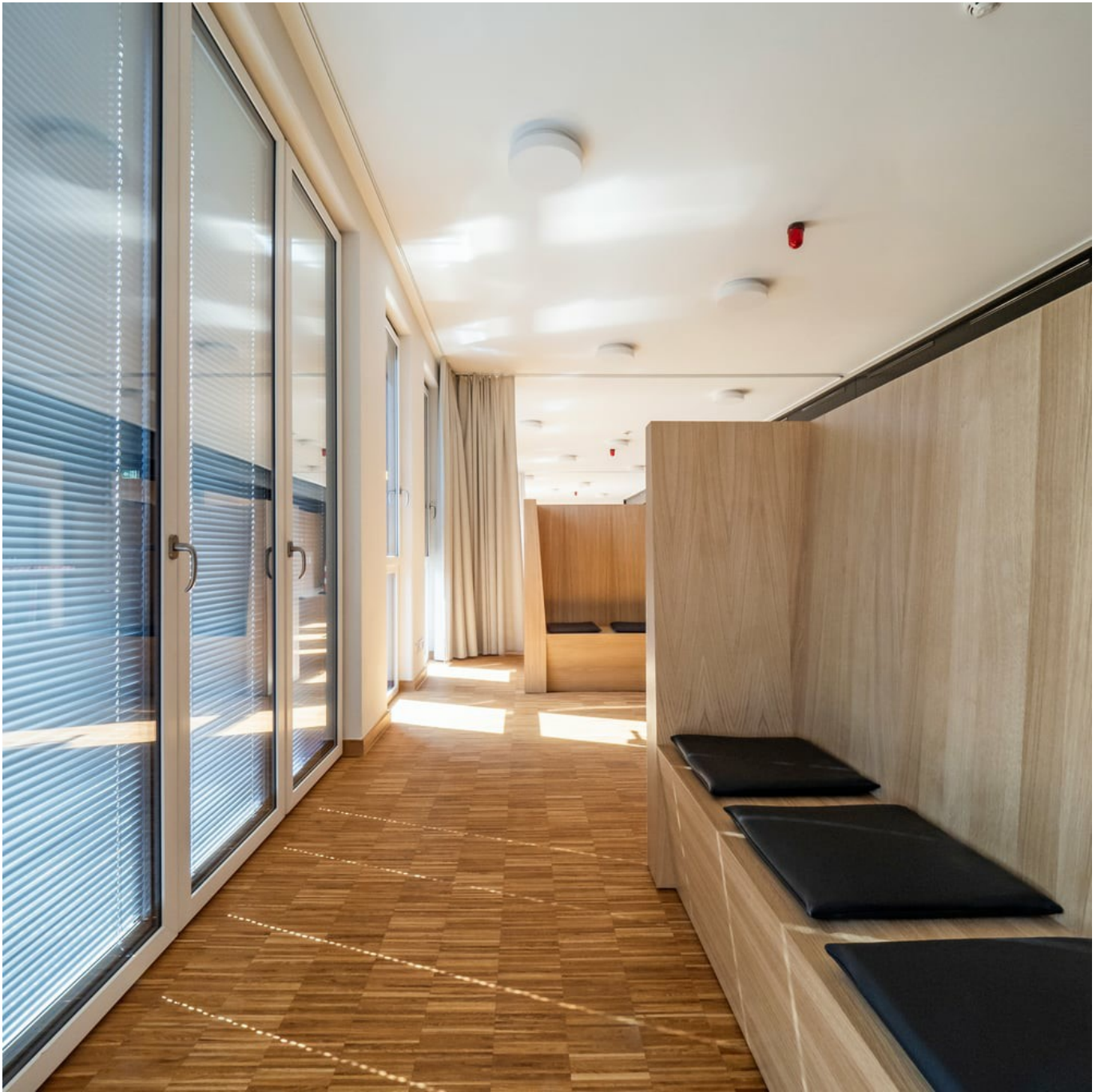


Main fire station in Regensburg

A significant building with a considerable window presence.

www.finstral.com/en/references/main-fire-station-in-regensburg/311-11895.html





Main fire station in Regensburg

A significant building with a considerable window presence.

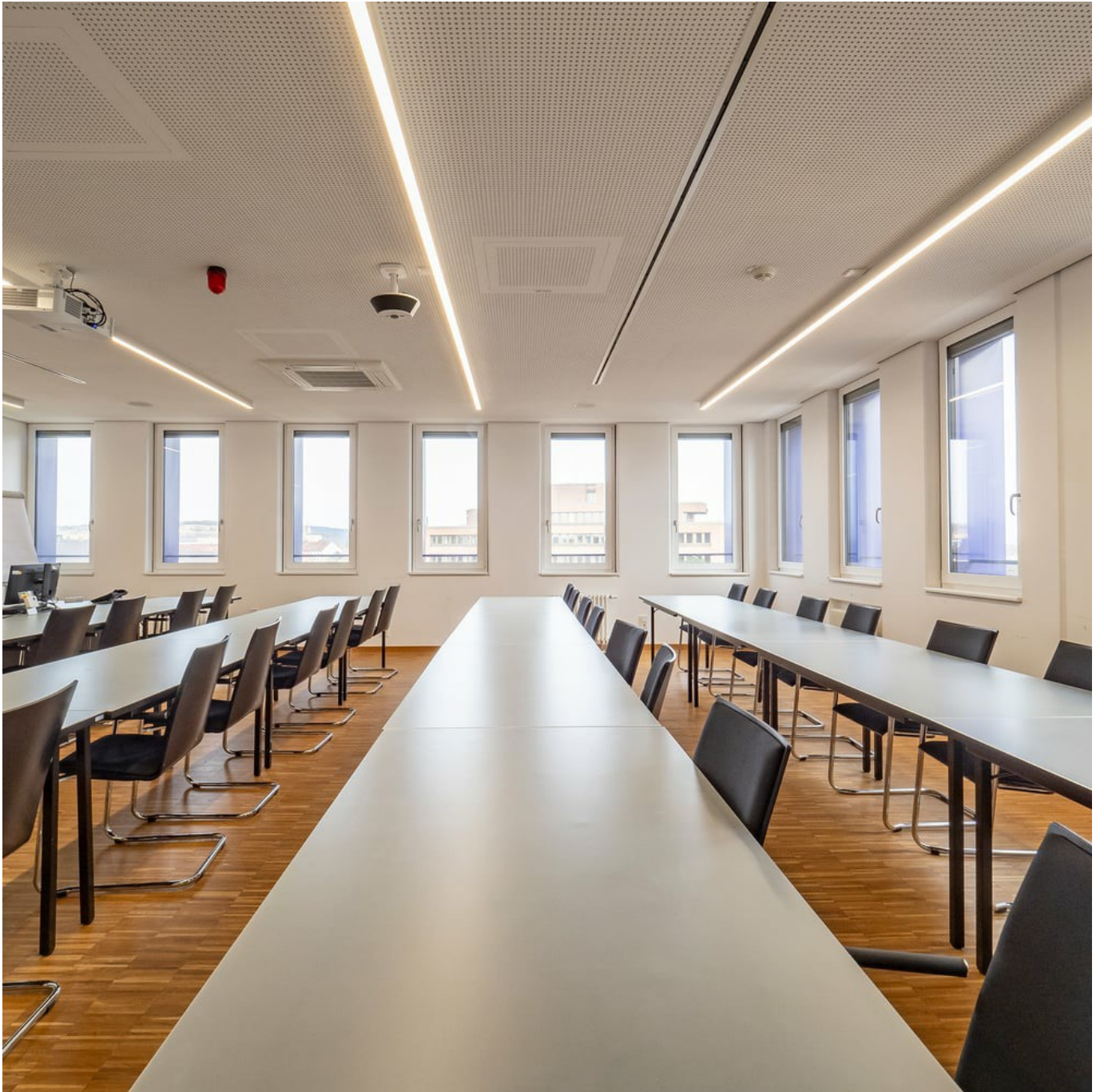
www.finstral.com/en/references/main-fire-station-in-regensburg/311-11895.html



Main fire station in Regensburg

A significant building with a considerable window presence.

www.finstral.com/en/references/main-fire-station-in-regensburg/311-11895.html



Main fire station in Regensburg

A significant building with a considerable window presence.

www.finstral.com/en/references/main-fire-station-in-regensburg/311-11895.html



Main fire station in Regensburg

A significant building with a considerable window presence.

www.finstral.com/en/references/main-fire-station-in-regensburg/311-11895.html





Main fire station in Regensburg

A significant building with a considerable window presence.

www.finstral.com/en/references/main-fire-station-in-regensburg/311-11895.html



Main fire station in Regensburg

A significant building with a considerable window presence.

www.finstral.com/en/references/main-fire-station-in-regensburg/311-11895.html



Main fire station in Regensburg

A significant building with a considerable window presence.

www.finstral.com/en/references/main-fire-station-in-regensburg/311-11895.html

Products used

U_w - Heat transmittance coefficient of window element

R_w - Sound insulation properties of a window

npd - No performance determined



FIN-Window Nova-line Twin N 90+8

aluminium-uPVC

U_w 1-sash 2-/3-glazing:

1,0 / 0,90 W/m²K

U_w 2-sash 2-/3-glazing:

1,1 / 0,98 W/m²K

R_w Standard:

40 (-2;-7) db

R_w Best value:

44 (-2;-7) db



FIN-Window Classic-line N 90+8

aluminium-uPVC

U_w 1-sash 2-/3-glazing:

1,2 / 0,75 W/m²K

U_w 2-sash 2-/3-glazing:

1,3 / 0,85 W/m²K

R_w Standard:

32 (-2;-6) db

R_w Best value:

45 (-1;-3) db

Product data sheets and more information at
www.finstral.com/range