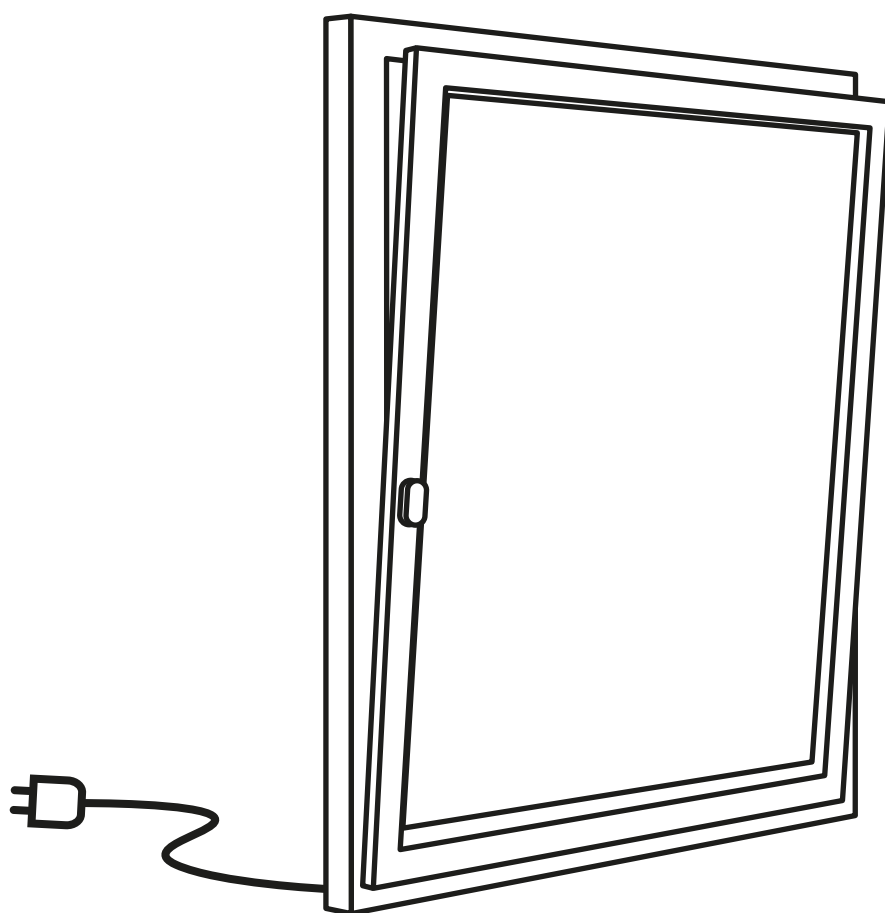


Operating and safety instructions.

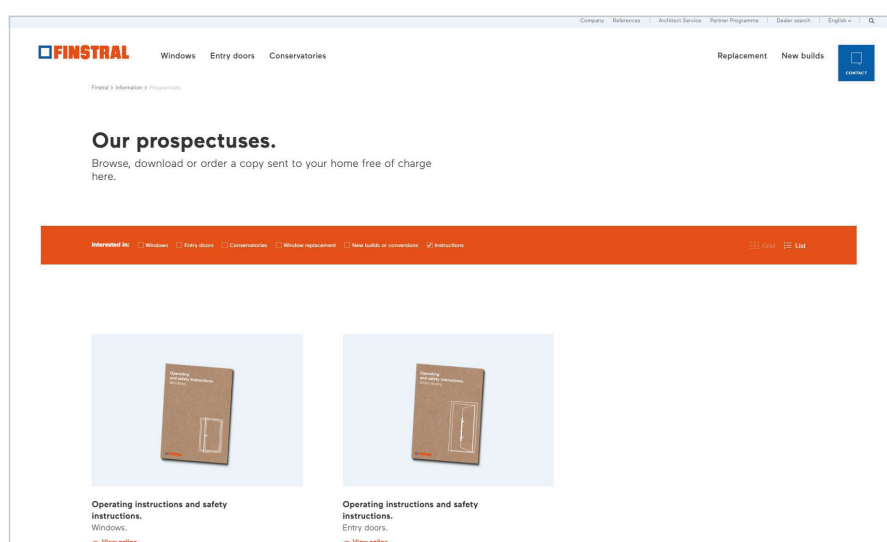
Motorised tilt-and-turn fittings.



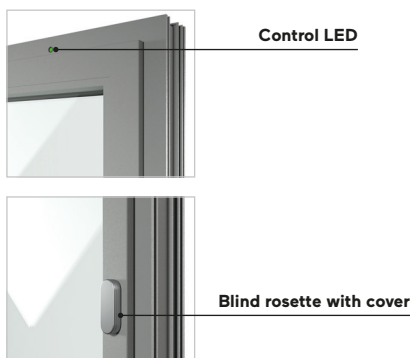
Contents

Component description	4
Safety instructions	4
Wall switch	5
Radio remote control	9
Identifying and solving problems	12

For further information on the operation and care of our Finstral products, please refer to the instructions in our document "Operating and safety instructions. Windows." You can find it at: finstral.com/manuals



Component description



Safety instructions

- If the window closure is motor-driven, do not push it by hand. If the window tilting or opening is motor-driven, do not pull the element by hand. The chain drive could be damaged.
- Keep the lever in a safe place. It is required in case of manual emergency operation.



Safety and cleaning instructions

Further safety instructions and general information on window cleaning can be found in the instructions for use for windows ("Operating and safety instructions. Windows.") at: finstral.com/manuals

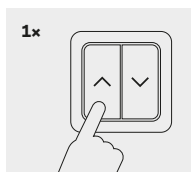
Wall switch

Window in tilt position

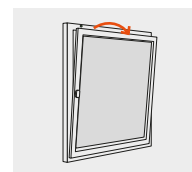
This is how you bring the window into the tilt position via the wall switch.

Opening via the key

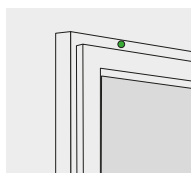
1. Press the "Open" key 1 time.



3. The window tilts independently in several seconds. As soon as the window is fully tilted, the green LED goes off.

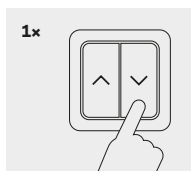


2. The LED lights up green.

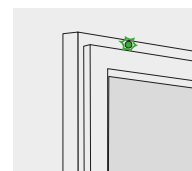


Closing via the key

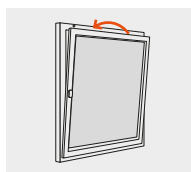
1. Press the "Close" key 1 time.



3. When the window is completely closed, the green LED flashes briefly.



2. The window closes independently over several seconds.

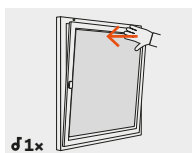


Wall switch

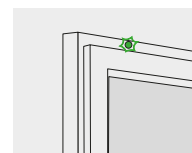
Closing the window in the tilt position via the auto lock function

As soon as the window is tilted or pushed shut, the tilt-and-turn fittings automatically engage and lock the window independently. If the window is not pressed properly or is blocked or the window tilts back, the drive tries to lock up to 4 times. However, if the window is shut but has not been locked correctly, the locking mechanism will retract without further attempts. In this case, first open or tilt the window completely. The motor-driven locking mechanism then becomes active again. The auto lock function is inactive in the event of a power failure.

1. Press the window. The drive beeps 1 time.



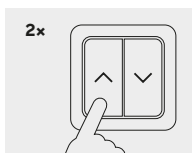
2. The window closes and locks independently. The green LED lights up briefly as soon as the window is in the fully closed position.



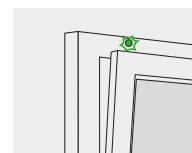
Window in 10-minute tilt position

With the 10-minute tilt position, the window tilts independently and closes after 10 minutes. This setting is useful if you want to ventilate the room via a tilted window for 10 minutes.

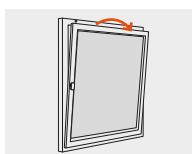
1. Press the "Open" key 2 time.



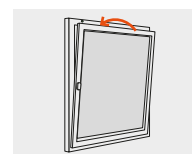
3. The window is in the tilt position for 10 minutes. The LED flashes green.



2. The green LED lights up, the window tilts independently.



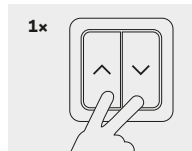
4. After 10 minutes, the window closes and locks independently. The green LED lights up briefly. The window is then in the closed position.



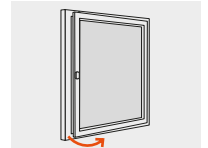
Window in the open position

Here, you can find out how to move the window to the open position via the wall switch.

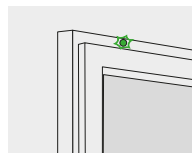
1. Press the "Open" and "Close" keys 1 time simultaneously.



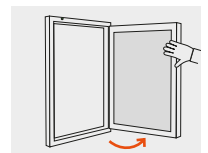
3. As soon as the window is completely unlocked, the element beeps 2 times.



2. The window unlocks independently, the green LED flashes for several seconds.



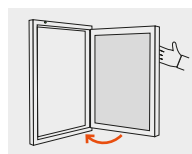
4. You can open the window manually.



Closing window in the opening position with the auto lock function

As soon as the window is tilted or pushed shut, the tilt-and-turn fittings engage and lock the window independently. If the window is not pressed properly or is blocked or the window tilts back, the drive tries to lock up to 4 times. However, if the window is shut but has not been locked correctly, the locking mechanism will retract without further attempts. In this case, first open or tilt the window completely. The motor-driven locking mechanism then becomes active again. The auto lock function is inactive in the event of a power failure.

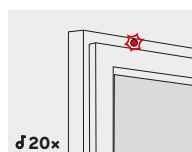
Press the window. The window locks automatically.



Reference run

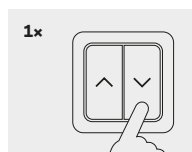
The reference run brings the element to the starting position. The element can then be operated.

1. The LED flashes red. The element beeps 20 times.



3. The reference run starts. It lasts about 30 seconds.

2. Press the "Close" key 1 time. The LED then flashes green briefly.



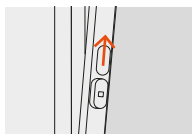
Wall switch

Manual emergency operation

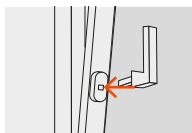
With manual operation, the open commands via motor-driven components are inactive.

When the window is tilted

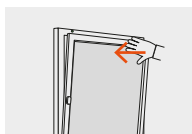
1. For manual operation, move the cover of the blind rosette so that it is visible.



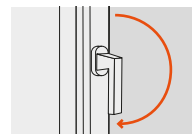
2. Insert the lever into the rosette. The lever must be vertically upwards.



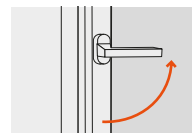
3. Manually press the window shut.



4. Turn the lever 180° so that it points vertically downwards. The lever is in the locked position.

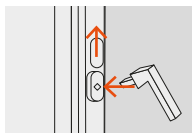


5. Turn the lever 90° in the opening direction. It is in the open position.

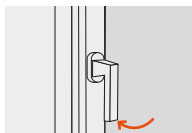


With the window closed

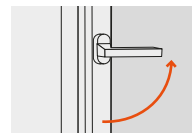
1. Insert the lever into the rosette. It must be at approx. 45°.



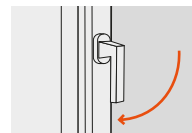
2. Turn the lever to the locking position. It must be placed vertically downwards. This is the only way to decouple the drive from the fittings.



3. Turn the lever 90° in the opening direction.



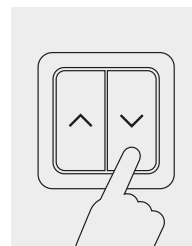
4. Close the window. Turn the lever to the locking position.



After manual operation

After manual operation, pull off the lever and slide the cover over the blind rosette. As soon as the window is closed and locked, press the "Close" key. This engages the drive and all functions are available again.

If the drive is not engaged, it is not possible to operate the drive. In this case, the drive moves up for three seconds after pressing the "Open" key and then returns to the starting position.



Radio remote control

Remote control

You have either a 1-channel or a 5-channel remote control.

1-channel remote control



5-channel remote control



The channels of the 5-channel remote control

There are five different channels. When you press the channel selector switch, you can see which channel you are in. The first four channels are identified by the individual LEDs. The fifth can be identified by the fact that all four LEDs light up. You can change the channel by pressing the channel selector switch again.

LED status display lighting scheme	
1	• • • • •
2	• • • • •
3	• • • • •
4	• • • • •
5	• • • • •

Same channel – multiple elements

You can programme several motor-driven elements on the same channel. For example, you can save and operate two windows on channel 1 and three other windows on channel 2.

Reach

The range of the remote controls is up to 40 metres and depends on whether the communication path between the element and the remote control is free or whether there are obstacles (walls etc.) in between. The fewer obstacles there are between the remote control and the element, the further the signal will reach.

Radio remote control

Operation

If you have a 5-channel remote control, make sure that the correct channel is selected in which the item(s) to be operated is stored before operating it by pressing the channel selector switch.

"Tilt" and "Close" keys

Briefly pressing the "Tilt" key tilts the window completely.



Briefly pressing the "Close" key closes the element completely.



The stop function

The element is in motion. Press the "my" key briefly to stop the element. By pressing the "my" key again, the element continues to move in the direction it was moving before it stopped.



Adding a remote control via a taught remote control

If you have motor-driven window that can be operated via a remote control, you can teach-in another of the same type via an already saved remote control.

1. With a remote control that has already been saved, press the programming key (prog) for approx. 2 seconds.



2. If you want to add a 5-channel remote control, first select the desired channel via the channel selector switch. Press the programming key (prog) on the remote control to be added for approx. 2 seconds. The remote control is added.



Deleting a remote control via a taught remote control

If you have motor-driven window that can be operated via a remote control, you can delete another via an already saved remote control.

1. With a remote control that has already been saved, press the programming key (prog) for approx. 2 seconds.



2. If you want to delete a 5-channel remote control, first select the desired channel via the channel selector switch. Press the programming key (prog) on the remote control to be deleted for approx. 2 seconds. The remote control is deleted.



Adding a channel with the 5-channel remote control

Make sure the remote control is on the correct channel. To do this, press the channel selector switch, which shows you which channel the remote control is on, and set the correct channel if necessary. Then proceed in the same way as for adding a remote control (see page 10).



Information

It is not possible to delete only one channel on a 5-channel remote control. Only the entire remote control can be deleted.

Replacing the battery

If you need to replace the battery, proceed as follows.

1. Unscrew the cover of the remote control as shown in the illustration.



2. Push the empty battery carefully out of the compartment with a plastic object or a screwdriver.



3. Insert a new battery (type CR 2032 3V) into the holder so that the side with the plus sign is visible. Take into account the polarity. The connections must not be short-circuited. Push the battery into the compartment.



4. Refit and screw on the cover.



Wall holder for remote control

The wall bracket is used to attach the remote control to the wall. Here you can find out how to attach it to the wall.

1. Remove the protective film from the adhesive surface on the back of the wall bracket.



2. Attach the wall bracket to a smooth, clean and dry surface. Press it firmly so that it sticks well.



3. Place the remote control on the wall bracket.



Identifying and rectifying problems

Problem	Cause	Solution
The tilt-and-turn motor cannot be opened manually.	The decoupling does not work.	Perform the manual emergency operation, see page 7.
The tilt-and-turn motor cannot be opened.		
The auto lock function does not work. / The window does not move to the opening position.	The window was previously operated manually.	Couple the tilt-and-turn motor. / Contact the technical service of the installation company.
The tilt-and-turn motor does not move to the "Open"/"Close" position.	no power supply	Check the power supply.
	The fittings are blocked or too stiff.	Check the windows for manual function and remove the blockage if necessary.
	The fittings are too smooth-running.	Increase the pressure.
	The drive is dirty.	Check the drive for dirt and clean it if necessary.
	Especially when moving to the "Open" position: The drive is already in the "Open" position.	Check the position of the window sash and perform a reference run if necessary.
	Especially when moving to the "Close" position: The drive is already in the "Close" position.	

Problem	Cause	Solution
The tilt-and-turn motor beeps several times and stops. The LED flashes red continuously.	high wind pressure	Wait until the wind pressure decreases.
	draught	Eliminate the reason for the draught.
	The fittings are blocked or too stiff.	Check the windows for manual function and remove the blockage if necessary.
	power failure	Remedy the voltage failure and perform a reference run.
The tilt-and-turn component beeps several times and tries to move slowly up to 3 times in the "Close" position (after the 3rd attempt, the drive stops). The LED flashes red continuously.	high wind pressure	Wait until the wind pressure decreases.
	draught	Eliminate the reason for the draught.
	The fittings are blocked or too stiff.	Check the windows for manual function and remove the blockage if necessary.
The LED flashes green after tilting via the motor.	The 10-minute tilt position is activated.	After 10 minutes, the window closes independently. If you want to close it earlier, cancel the 10-minute tilt position by closing the window manually or via the "Close" key.

Copyright

© Finstral AG, Unterinn/Ritten, 2023
All rights reserved.

The Finstral logo is a registered image mark of Finstral AG.
The name "Finstral" is a registered word mark of Finstral AG.

Edition May 2023

Item number 60-0310-00-07

Subject to technical changes. Colour may differ from original products owing to printing processes. The presentation and description of the products in the prospectuses are for indicative purposes only. Should the product delivered deviate in any way from the product appearing in the advertising material, this shall not constitute any defect or deviation as only the order may be used as a benchmark.

Always there for you. Call us or call in.

Finstral Studio Unterinn

Headquarters, 600 m² exhibition
Unterinn/Ritten, Italy

T +39 0471 296611

finstral.com/unterinn

Finstral Studio Friedberg

Showroom, 1,000 m² exhibition
Derching/Friedberg, Germany

T +49 821 2071780

finstral.com/friedberg

Finstral Studio Apeldoorn

Showroom, 350 m² exhibition
BN Apeldoorn, Netherlands

T +31 055 5380060

finstral.com/apeldoorn

Finstral Studio Wihr-au-Val

Showroom, 350 m² exhibition
Wihr-au-Val, France

T +33 03 89717100

finstral.com/wihrauval

Finstral Studio Tarragona

Showroom, 320 m² exhibition
43144 Vallmoll - Tarragona, Spain

T +34 977 637001

finstral.com/tarragona

Finstral Studio Crissier

Showroom, 180 m² exhibition
Crissier, Switzerland

T +41 021 8861240

finstral.com/crissier

Finstral Studio Brussels

Showroom, 600 m² exhibition
Zaventem, Belgium

T +32 02 616 09 17

finstral.com/brussels

Finstral Studios in your vicinity:

finstral.com/dealer-search