

FIN-Project Nova-line 78/88
aluminium-aluminium

Single-family house in Banyoles

FIN-Project in a house with a hard shell and a soft core.

The exterior architecture of this single-family house is characterised by its solid, clear forms. The reddish brick elements fit perfectly into the massive grey building. While the façade radiates strength and stability, Nova-line, with the narrowest frame design on the market, brings lightness and an all-glass look to the large, bright interiors.

The house has been Energy Class A certified. The FIN-Project window system, in combination with Nova-line, represented the best decision: its slender frames, PVC profiles welded into the core and generous depth with large air chambers all ensure optimum insulation and excellent insulation values. The FIN-Slide sliding doors guarantee maximum light incidence and outstanding sealing. The material chosen – aluminium in anthracite Sablé – is easy to care for and, despite its dark colour, extremely heat-resistant and stable in terms of shape. Energy-efficient living – all at reasonable cost.

Type of building	Single-family dwelling
Construction	2018
Project Planning	New build/conversion Miquel Duran
Country	Spain
Region	Girona
Locality	Banyoles
Photographer	Ángel García Vicente



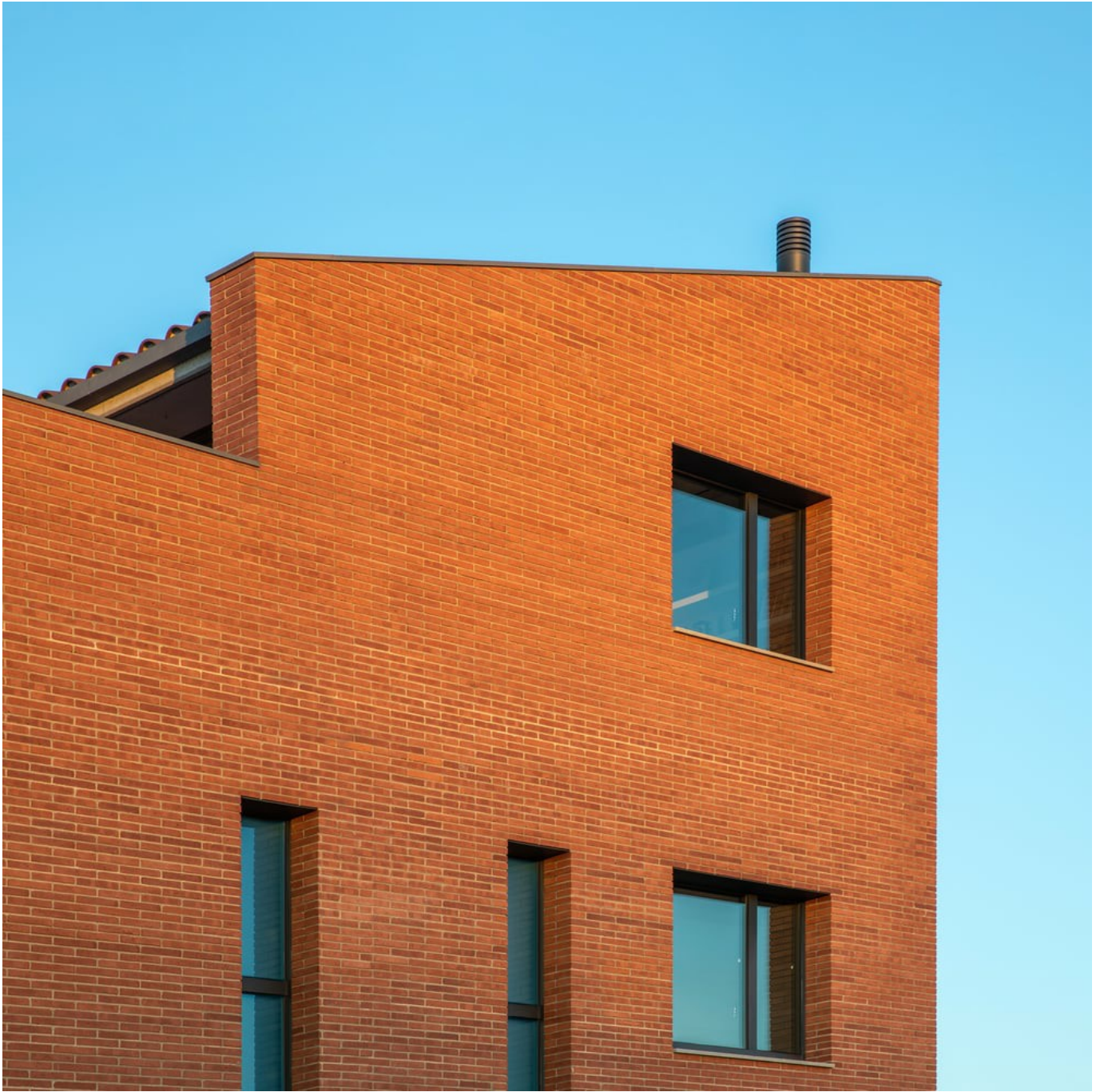
Factoria Canabal
C/ Enric Prat de la Riba, 140
08901 Hospitalet - Barcelona
Spain
[933386080](tel:933386080)
canabal@factoriacanabal.com
www.factoriacanabal.com



Single-family house in Banyoles

FIN-Project in a house with a hard shell and a soft core.

www.finstral.com/en/references/single-family-house-in-banyoles/311-4137.html





Single-family house in Banyoles

FIN-Project in a house with a hard shell and a soft core.

www.finstral.com/en/references/single-family-house-in-banyoles/311-4137.html



Single-family house in Banyoles

FIN-Project in a house with a hard shell and a soft core.

www.finstral.com/en/references/single-family-house-in-banyoles/311-4137.html



Single-family house in Banyoles

FIN-Project in a house with a hard shell and a soft core.

www.finstral.com/en/references/single-family-house-in-banyoles/311-4137.html



Single-family house in Banyoles

FIN-Project in a house with a hard shell and a soft core.

www.finstral.com/en/references/single-family-house-in-banyoles/311-4137.html







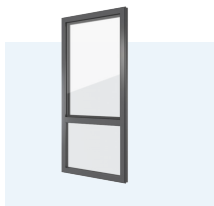


Products used

U_w - Heat transmittance coefficient of window element

R_w - Sound insulation properties of a window

npd - No performance determined



FIN-Project Nova-line 78/88

aluminium-aluminium

U_w 1-sash 2-/3-glazing:

1,2 / 0,82 W/m²K

U_w 2-sash 2-/3-glazing:

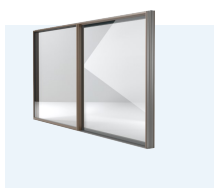
1,2 / 0,94 W/m²K

R_w Standard:

38 (-2;-6) db

R_w Best value:

41 (-3;-7) db



FIN-Slide Nova-line Plus

aluminium-aluminium

U_w 1-sash 2-/3-glazing:

1,3 / 0,91 W/m²K

U_w 2-sash 2-/3-glazing:

1,5 / 1,1 W/m²K

R_w Standard:

npd

R_w Best value:

npd

Product data sheets and more information at

www.finstral.com/range