



FIN-Project Nova-line 78/88
aluminium-aluminium

Single-family house in Madrid

Glass, surfaces and ceilings – it's all covered!

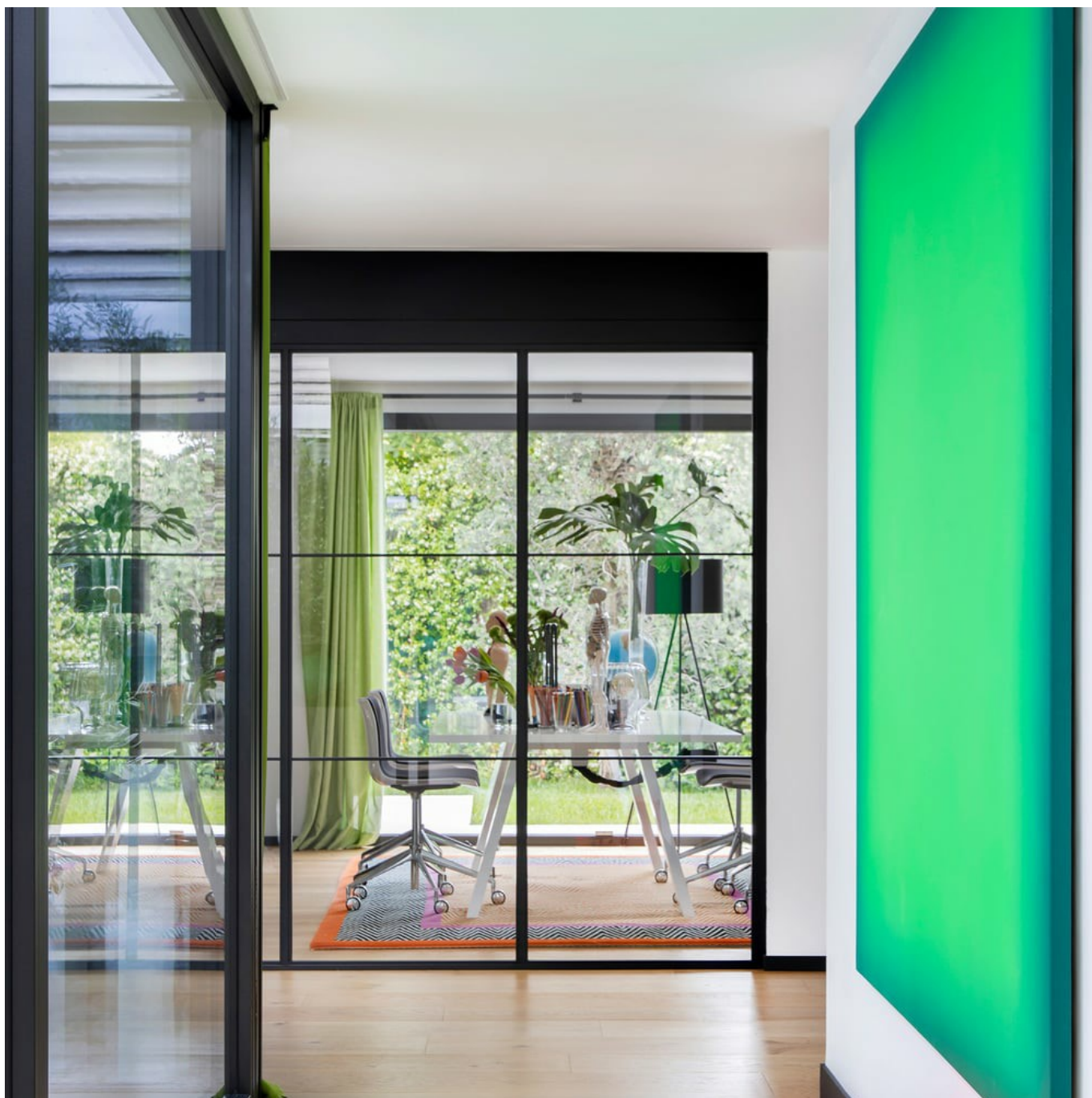
Straight lines, rectangular surfaces. And the top priority in the architectural planning of this house? The incidence of natural light! Wide rooms and large glass surfaces allow access and space for daylight from all sides. With so much glass – as part of the house façade, but also inside the house to divide the rooms – perspective becomes an optical trick: house and garden merge into each other, with the building repeatedly opening up to the greenery on all sides. The FIN-72 and FIN-Project windows, in Nova-line all-glass aesthetics, are accompanied by the FIN-Slide lift-and-slide door. Even the front door is made of glass – on both sides. Lots of light requires lots of glass. And lots of glass in turn requires the highest quality so as to ensure maximum comfort! Finstral windows, sliding and entry doors all guarantee security, not to mention thermal and acoustic insulation.

Type of building	Single-family dwelling
Construction	2019
Project	New build/conversion
Planning	Mill-House / Arq. Alicia Sanchez Moreno
Country	Spain
Region	Madrid
Locality	Alcobendas
Photographer	Paloma Pacheco Turnes



Insta-Hogar
C/ EBANISTERIA, 2
28850 TORREJON DE ARDOZ. MADRID
Spain
916771296
instahogar@instahogar.es
www.instahogar.com





Single-family house in Madrid

Glass, surfaces and ceilings – it's all covered!

www.finstral.com/en/references/single-family-house-in-madrid/311-3910.html



Single-family house in Madrid

Glass, surfaces and ceilings – it's all covered!

www.finstral.com/en/references/single-family-house-in-madrid/311-3910.html

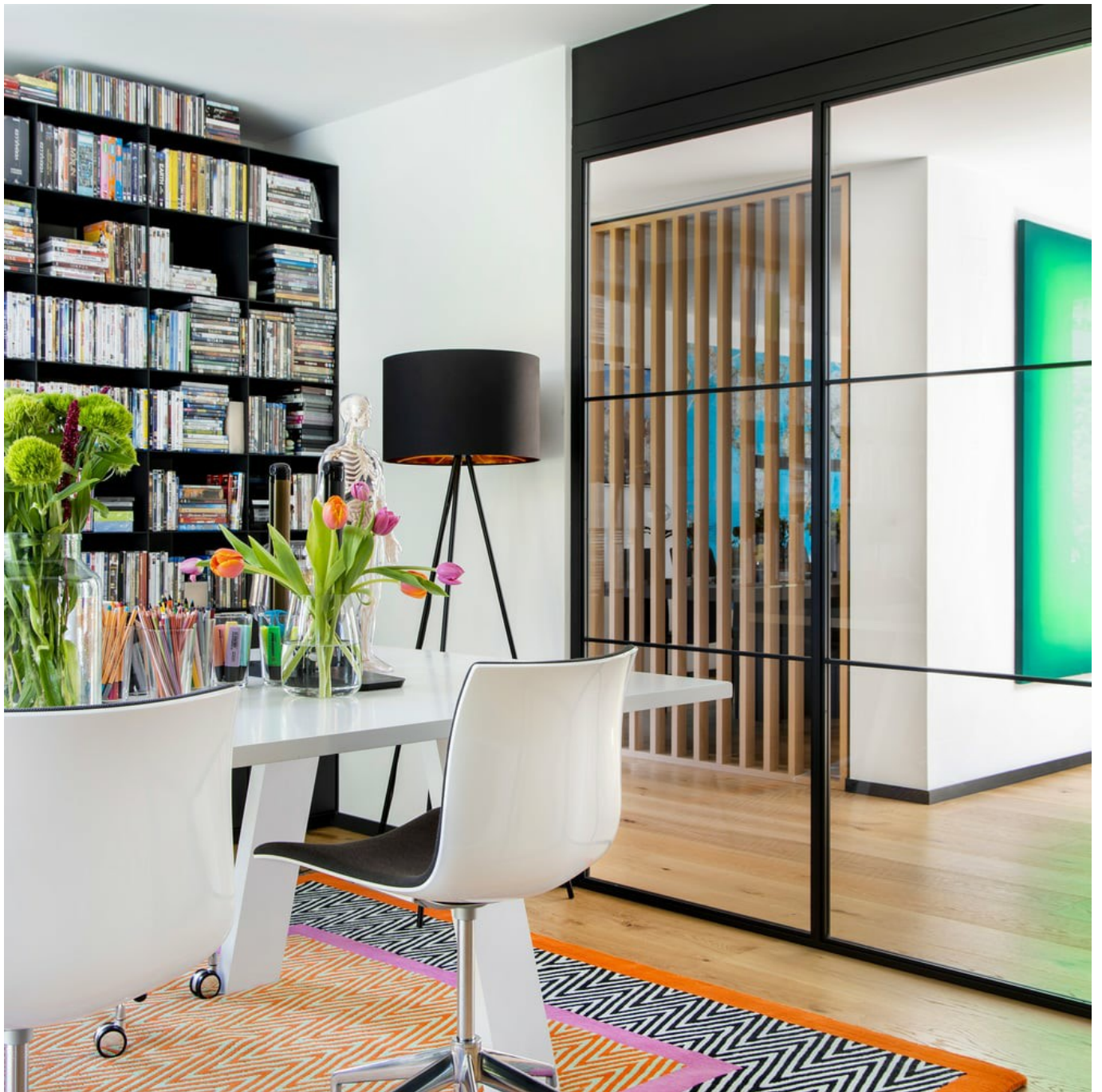




Single-family house in Madrid

Glass, surfaces and ceilings – it's all covered!

www.finstral.com/en/references/single-family-house-in-madrid/311-3910.html





Single-family house in Madrid

Glass, surfaces and ceilings – it's all covered!

www.finstral.com/en/references/single-family-house-in-madrid/311-3910.html



Single-family house in Madrid

Glass, surfaces and ceilings – it's all covered!

www.finstral.com/en/references/single-family-house-in-madrid/311-3910.html



Single-family house in Madrid

Glass, surfaces and ceilings – it's all covered!

www.finstral.com/en/references/single-family-house-in-madrid/311-3910.html



Single-family house in Madrid

Glass, surfaces and ceilings – it's all covered!

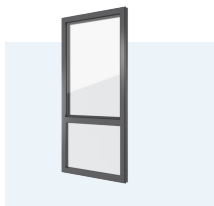
www.finstral.com/en/references/single-family-house-in-madrid/311-3910.html

Products used

U_w - Heat transmittance coefficient of window element

R_w - Sound insulation properties of a window

npd - No performance determined



FIN-Project Nova-line 78/88

aluminium-aluminium

U_w 1-sash 2-/3-glazing:

1,2 / 0,82 W/m²K

U_w 2-sash 2-/3-glazing:

1,2 / 0,94 W/m²K

R_w Standard:

38 (-2;-6) db

R_w Best value:

41 (-3;-7) db



FIN-72 Nova-line 72+8

aluminium-PVC

U_w 1-sash 2-/3-glazing:

1,2 / - W/m²K

U_w 2-sash 2-/3-glazing:

1,3 / - W/m²K

R_w Standard:

30 (-2;-6) db

R_w Best value:

38 (-3;-7) db

Product data sheets and more information at

www.finstral.com/range

Single-family house in Madrid

Glass, surfaces and ceilings – it's all covered!

www.finstral.com/en/references/single-family-house-in-madrid/311-3910.html