

FIN-Window Nova-line 90  
PVC-PVC

## House in Namur

PVC windows in a multi-family house.

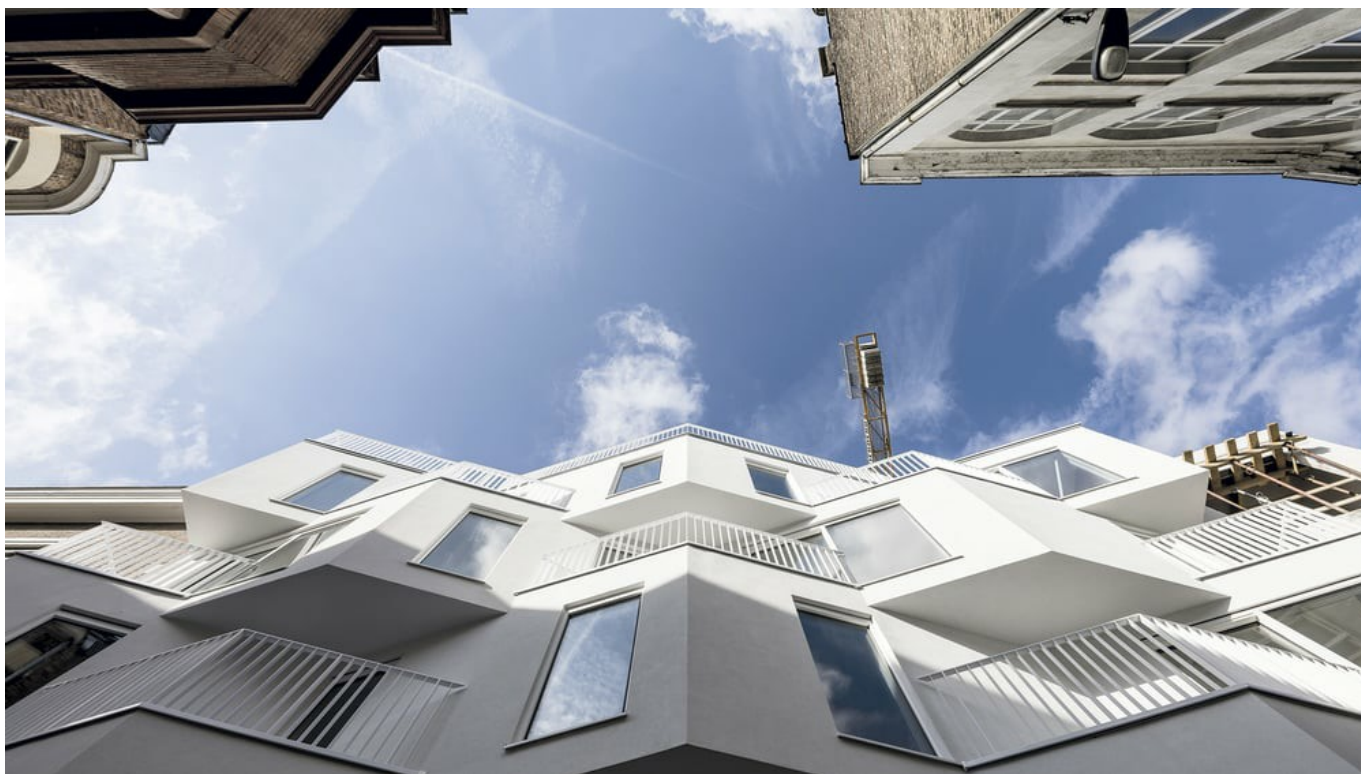
Where once stood an unassuming two-storey building there is now a modern, mixed residential property with studios for student and individual apartments. The special challenge of this new building was its height of only six metres. The architect opted for a larger floor space projecting over the street, into which balconies, windows and doors were all cleverly integrated. With their white PVC frames on the interior and exterior, the windows are a perfect match for the brightly coloured, clear structure of the multi-family house, while the PVC cores ensure excellent heat insulation values. The Nova-line sash frames are overlapped by the glass and provide additional support for its modern character. A sober entry door fits unobtrusively into the overall appearance of the structure, which won the 2019 Belgian building prize for "Rookie of the Year".

<b>Type of building</b>	Multiple-family dwelling
<b>Construction</b>	2018
<b>Project</b>	New build/conversion
<b>Planning</b>	Architect Ernest Perrine
<b>Country</b>	Belgium
<b>Region</b>	Wallonia
<b>Locality</b>	Namur
<b>Photographer</b>	Ernest Perrine



**CHIMSCO**  
châssis & protections solaires

**Chimsco châssis**  
Rue du Parc Industriel, 2  
5590 ACHENE  
Belgium  
083215761  
chassis@chimsco.be  
www.chimsco.be











**House in Namur**

PVC windows in a multi-family house.

[www.finstral.com/en/references/house-in-namur/311-3358.html](http://www.finstral.com/en/references/house-in-namur/311-3358.html)



# Products used

**U<sub>w</sub>** - Heat transmittance coefficient of window element

**R<sub>w</sub>** - Sound insulation properties of a window

**npd** - No performance determined



## FIN-Window Nova-line 90

*PVC-PVC*

U<sub>w</sub> 1-sash 2-/3-glazing:

1,2 / 0,79 W/m<sup>2</sup>K

U<sub>w</sub> 2-sash 2-/3-glazing:

1,2 / 0,90 W/m<sup>2</sup>K

R<sub>w</sub> Standard:

36 (-2;-5) db

R<sub>w</sub> Best value:

45 (-1;-3) db

Product data sheets and more information at

[www.finstral.com/range](http://www.finstral.com/range)